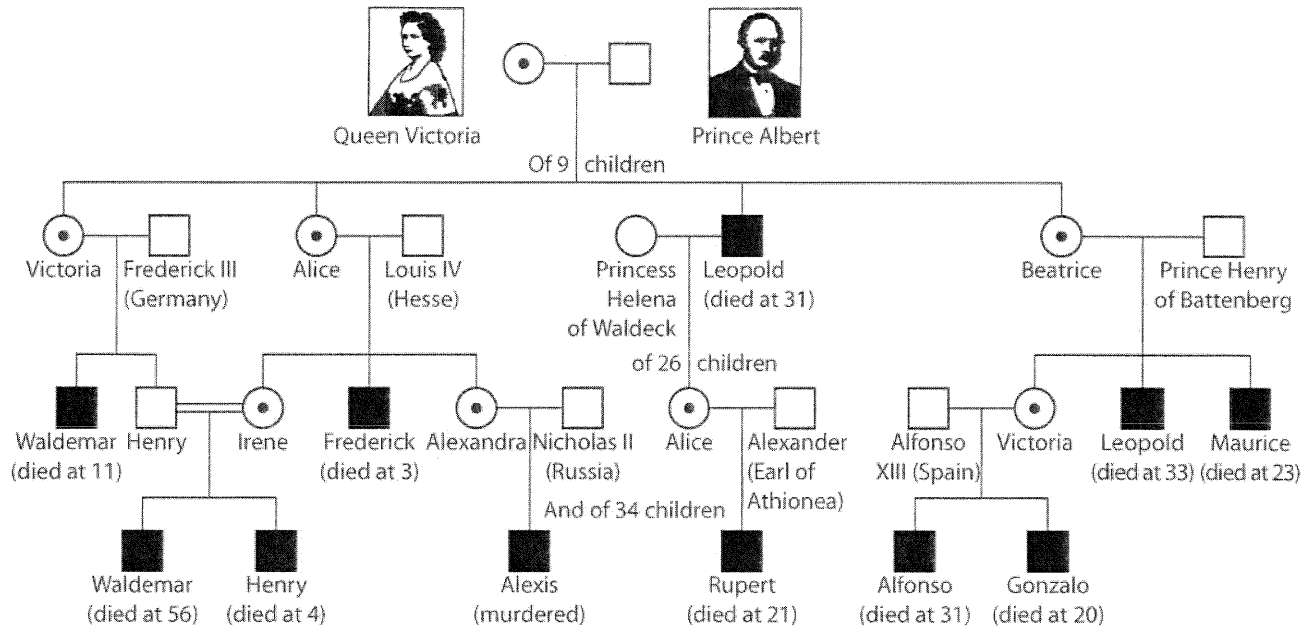


Pedigree—Sex-linked Recessive Traits



Pedigree showing the inheritance of hemophilia, an X-linked recessive trait, in the European Royal families. Males are much more likely to have hemophilia than females. Females who are heterozygous for the condition (carriers) can pass the trait on to their children. Note that only offspring that are either affected or carriers are shown in this pedigree.