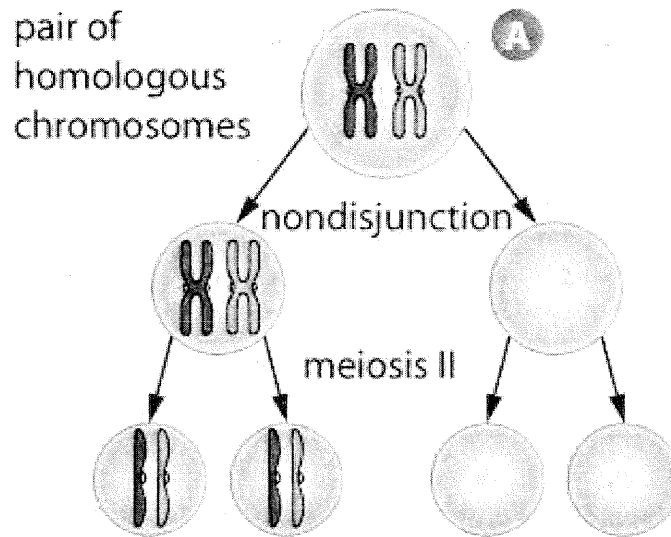
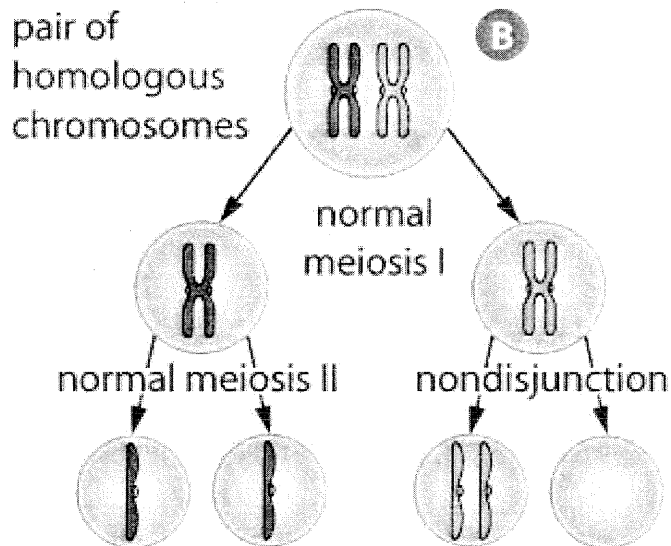


Nondisjunction



Abnormal gametes: two gametes have one extra and two gametes have one fewer chromosome than normal.



Gametes have usual number of chromosomes.

One gamete has one extra and the other has one fewer chromosome.

Nondisjunction results in gametes with too many or too few chromosomes. Nondisjunction may take place during anaphase I (A) or anaphase II (B).